

i.Mak®

REDÜKTÖR VARYATÖR SAN. ve TİC. A.Ş. / GEARBOX & VARIATOR CORPORATION

www.imakreduktor.com
www.իմաքլեզոյքթուտոսա

1973'ten bugüne
GÜÇLÜ çözümler üretiyoruz...








since 1973
we are producing **POWERFUL** solutions...

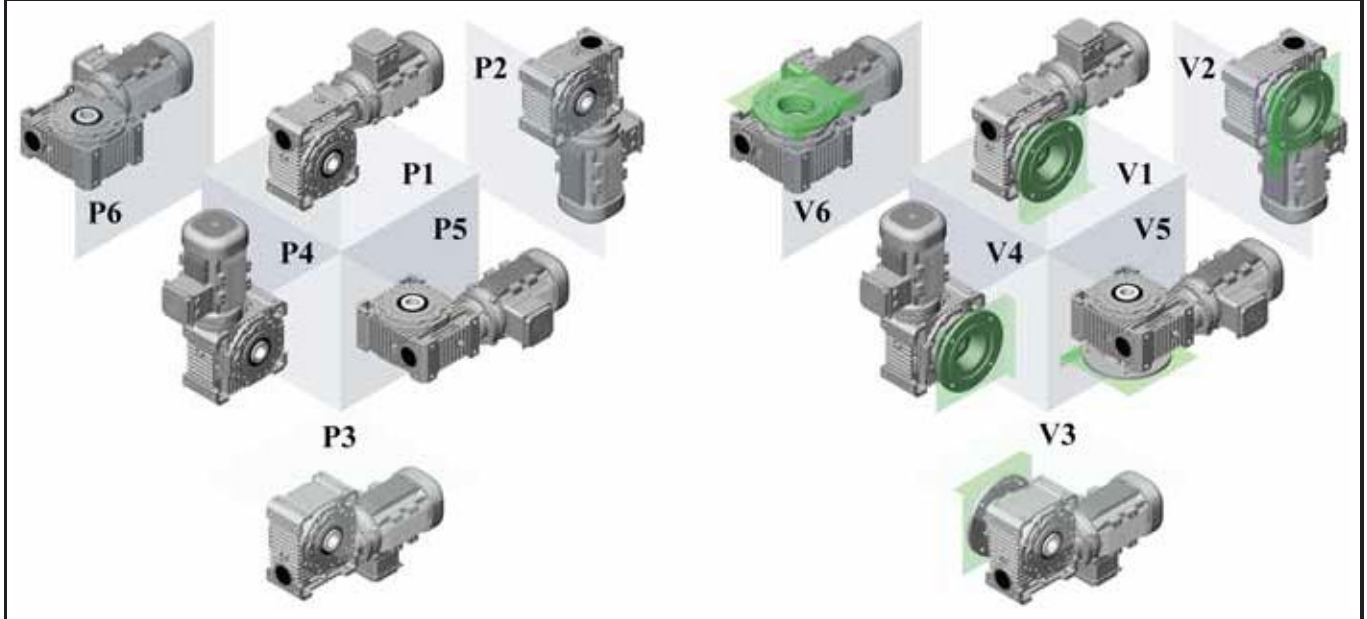
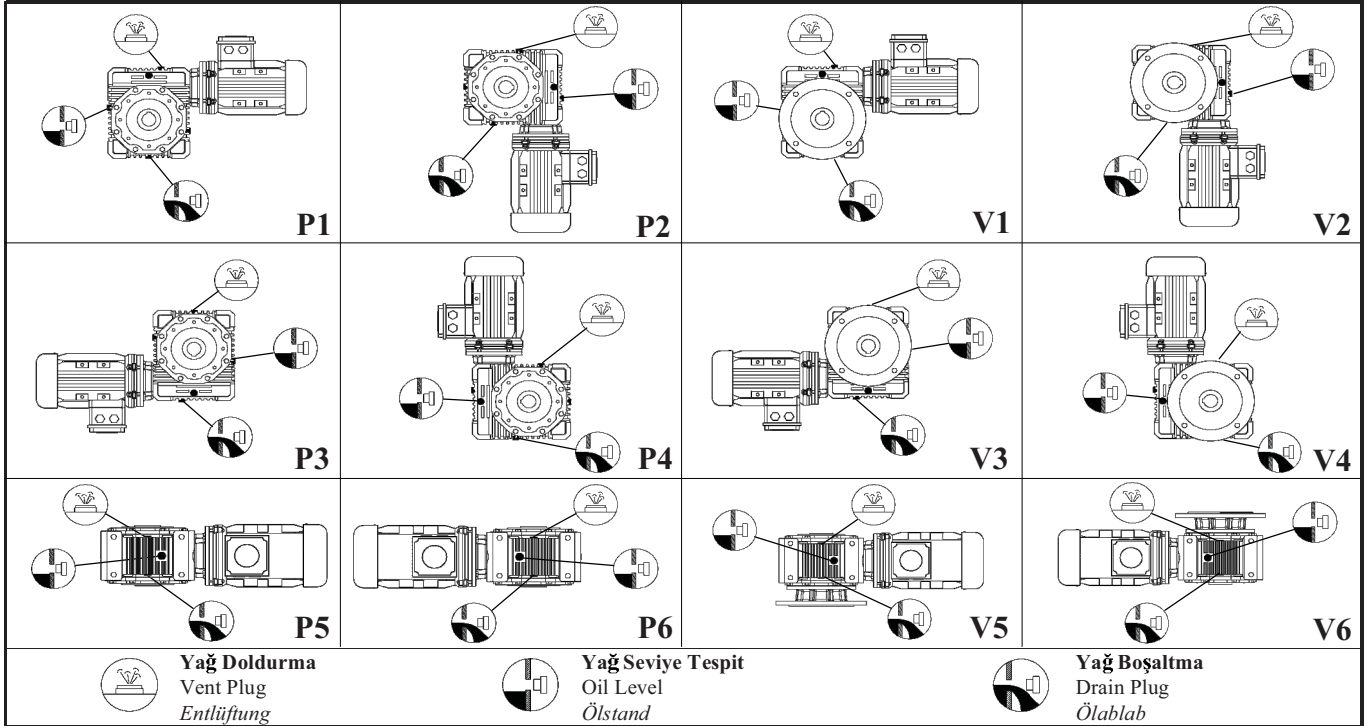


Yağ Tablosu

Lubricant Table

Schmiere Tabelle

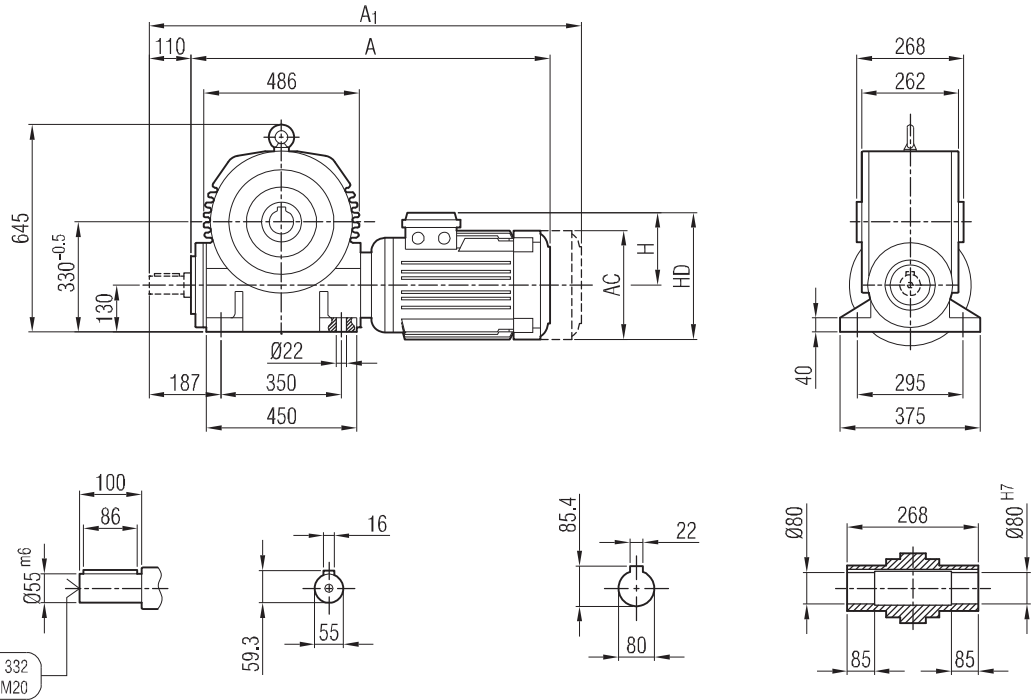
Yağ Cinsi Lubricant Art des Schmierstoffes	ISO Viskozite Sınıfı ISO Viscosity Class Viskozitäts Klasse ISO	Kullanım Sıcaklığı Usage Temperature Gebrauchstemperatur	Firma Firm Firma						
									
Mineral Yağ Mineral Oil Minerallöl	ISO VG 320	0.....+100	Degol BG 320	Mobilgear 632	Energol GR-XP320	Omala 320	Belgear M-320-Süper	GEM 1 320	Spartan EP 320
	ISO VG 220	-5.....+100	Degol BG 220	Mobilgear 630	Energol GR-XP220	Omala 220	Belgear M-220-Süper	GEM 1 220	Spartan EP 220
	ISO VG 150	-5.....+100	Degol BG 150	Mobilgear 629	Energol GR-XP150	Omala 150	Belgear M-150-Süper	GEM 1 150	Spartan EP 150
	ISO VG 100	-5.....+100	Degol BG 100	Mobilgear 627	Energol GR-XP100	Omala 100	Belgear M-100-Süper	GEM 1 100	Spartan EP 100
Sentetik Yağ Synthetic Oil Synthetisch Öl	ISO VG 320	-25.....+140	Degol GS 320	Gylgoyle 320	Enersyn SG-XP320			Syntheso D 320 EP	Glycolube 320
	ISO VG 220	-25.....+140	Degol GS 220	Gylgoyle 220	Enersyn SG-XP220	Tivela WB		Syntheso D 220 EP	
	ISO VG 150	-30.....+140	Degol GS 150		Enersyn SG-XP150			Syntheso D 150 EP	
	ISO VG 100	-30.....+140			Enersyn SG-XP100			Syntheso D 100 EP	



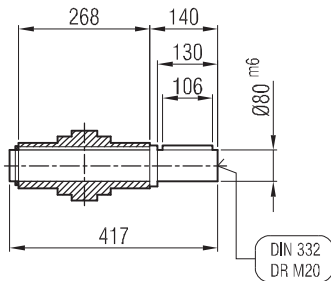
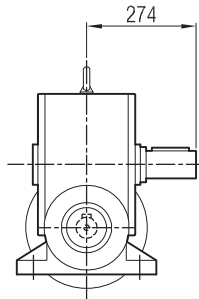
TİP Type Typ	Bağlantı Pozisyonları için Yağ Miktarları (litre) Oil Quantities for Mounting Positions (liter) Ölmengen Tabellen für Bauformen (liter)											
	P1	V1	P5	P6	V5	V6	P3	V3	P4	P2	V4	V2
İRS_M 52	0,6			0,65			0,3				0,5	
İRS_M 65	1,25			1,35			0,75				1	
İRS_M 82	2,25			2,35			1				2	
İRS_M 102	2,3			2,5			1,5				2	
İRS_M 127	4,5			4,75			3				4	
İRS_M 162	12			12,5			8				10	
İRS_M 201	18			24			23				21	
İRS_M 250	31			40			38				35	



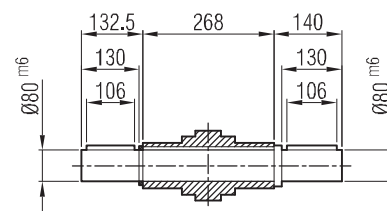
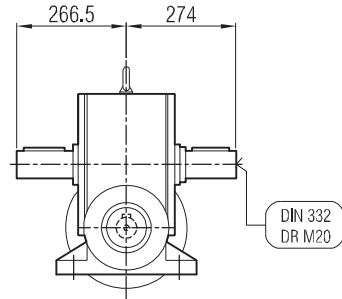
İRSAM 201



... -01



... -02



	56	63	71	80	90 S	90 L	100	112	132 S	132 M	160 M	160 L				
A									888	934	1002	1046				
A ₁									1030	1076	1192	1236				
H									182	182	225	225				
HD									314	314	385	385				
AC									279	279	325	325				

"A₁" Ölçüsü Frenli Motorlar içindir.

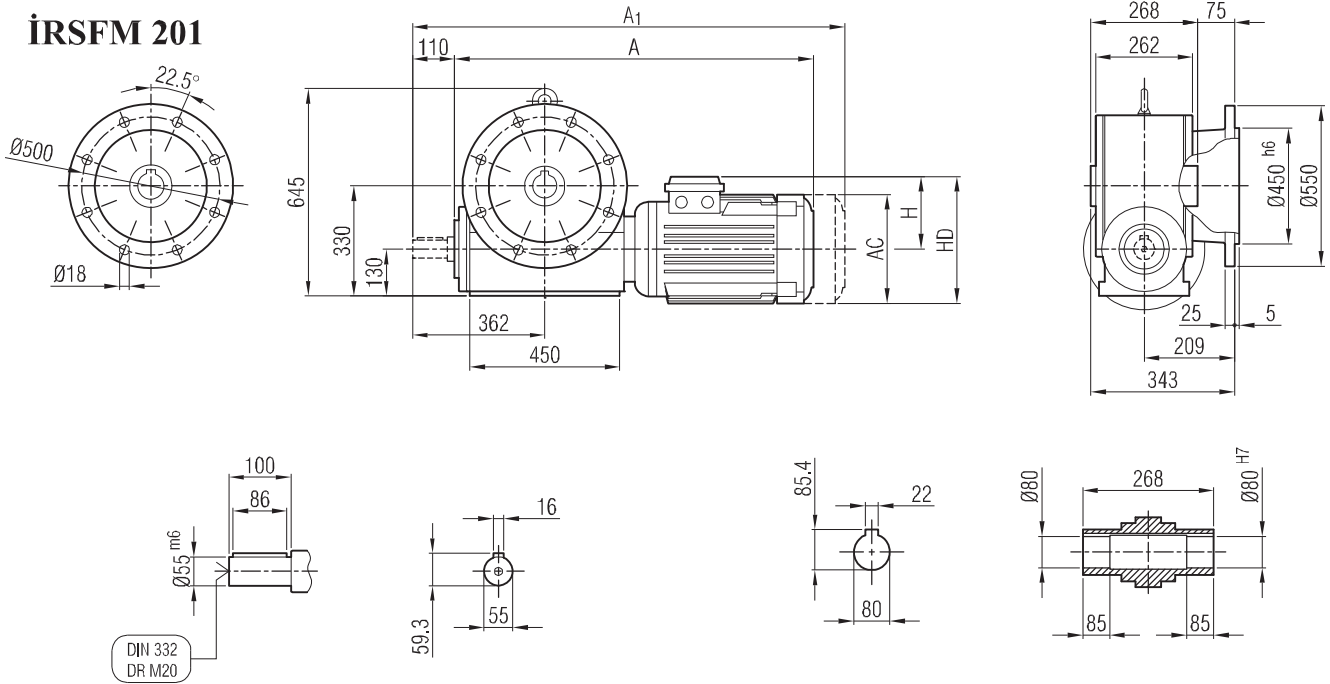
Dimension "A₁" is for motors with brake

Maß "A₁" ist für Motoren mit Bremse

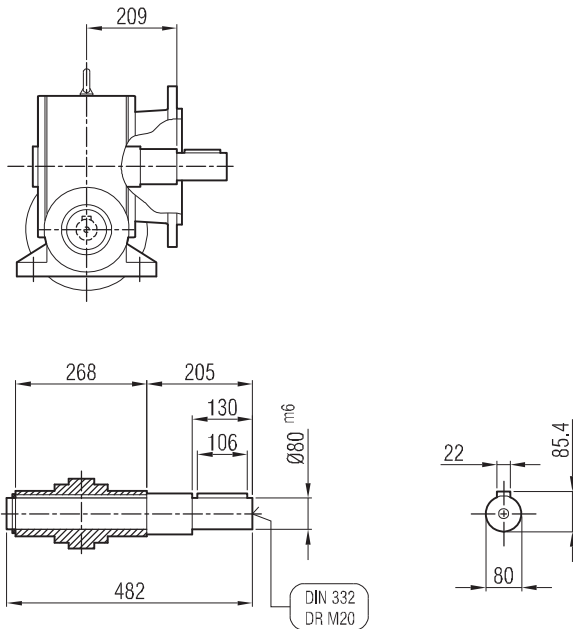




İRSFM 201



... -01



	56	63	71	80	90 S	90 L	100	112	132 S	132 M	160 M	160 L				
A									888	934	1002	1046				
A ₁									1030	1076	1192	1236				
H									182	182	225	225				
HD									314	314	385	385				
AC									279	279	325	325				

"A₁" Ölçüsü Frenli Motorlar içindir.

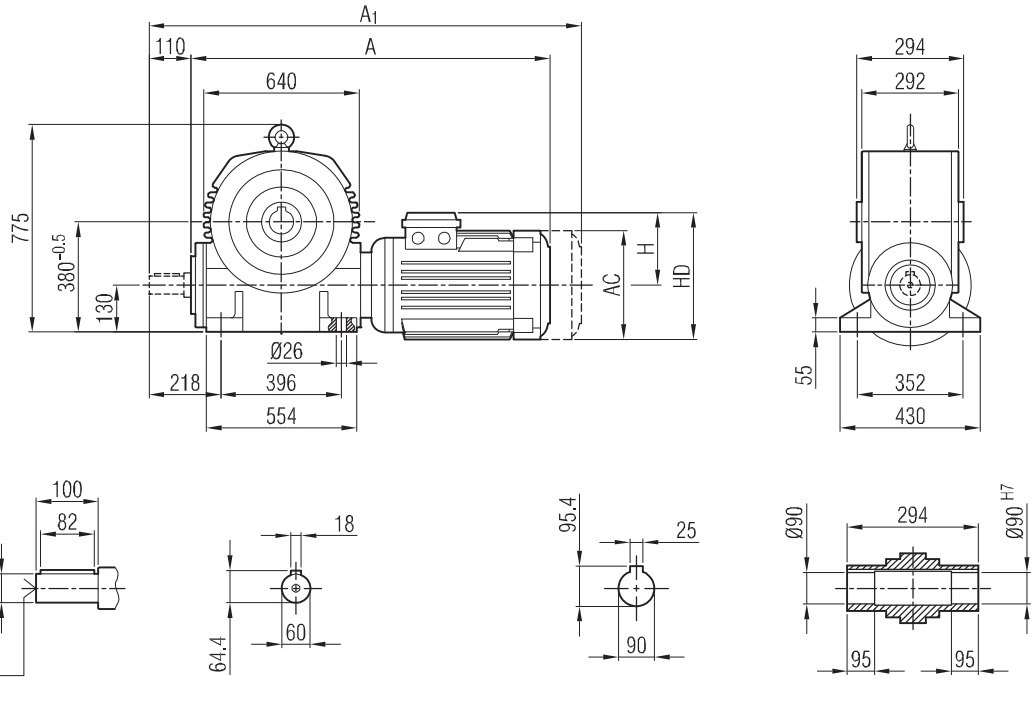
Dimension "A₁" is for motors with brake

Maß "A₁" ist für Motoren mit Bremse

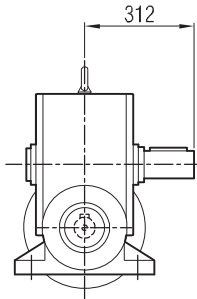




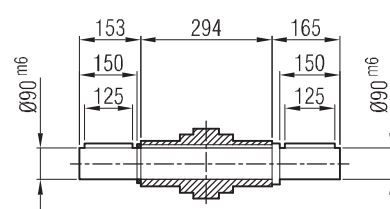
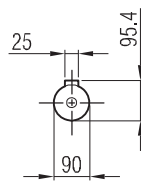
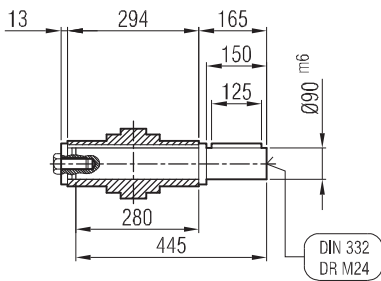
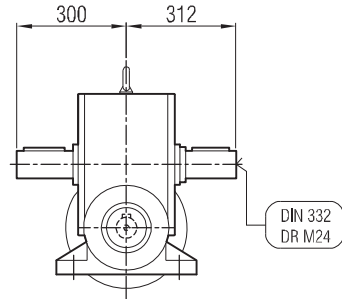
İRSAM 250



... -01



... -02



	56	63	71	80	90 S	90 L	100	112	132 S	132 M	160 M	160 L	180 M	180 L		
A												1150	1161	1199		
A ₁												1340	1356	1394		
H												225	248	248		
HD												385	428	428		
AC												325	370	370		

"A₁" Ölçüsü Frenli Motorlar içindir.

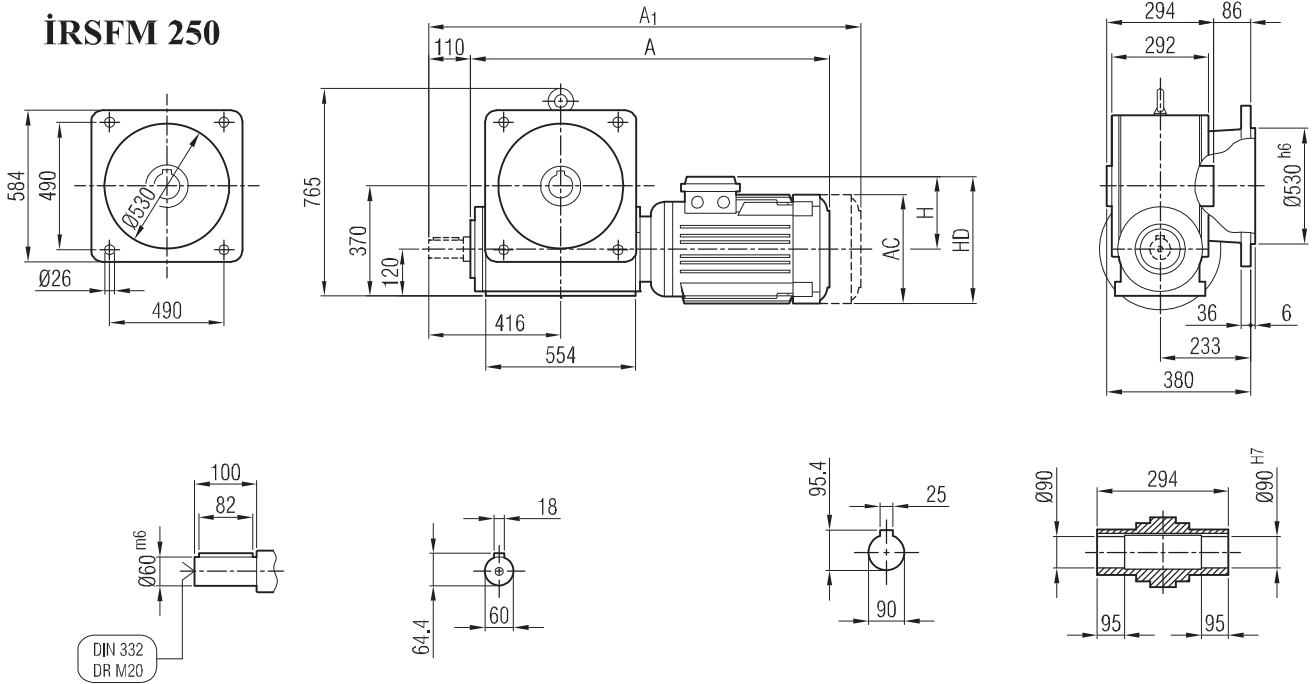
Dimension "A₁" is for motors with brake

Maß "A₁" ist für Motoren mit Bremse

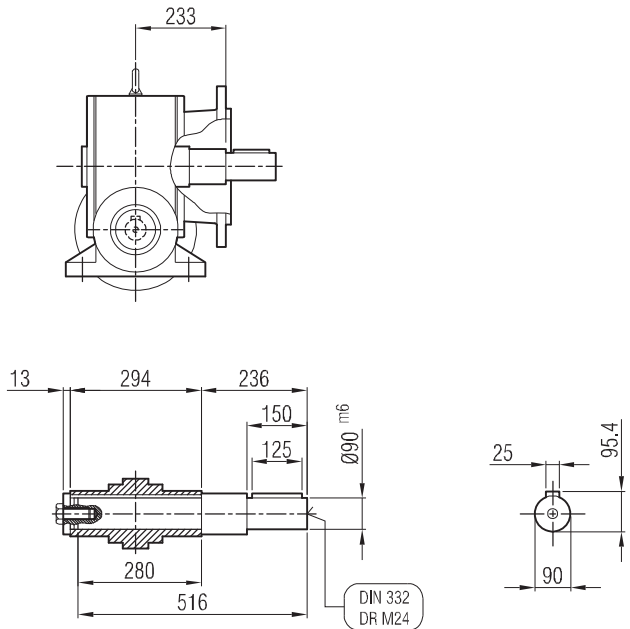




İRSFM 250



... -01



	56	63	71	80	90 S	90 L	100	112	132 S	132 M	160 M	160 L	180 M	180 L			
A												1150	1161	1199			
A ₁												1340	1356	1394			
H												225	248	248			
HD												385	428	428			
AC												325	370	370			

"A₁" Ölçüsü Frenli Motorlar içindir.
Dimension "A₁" is for motors with brake
Maß "A₁" ist für Motoren mit Bremse

